

The value of Dragon

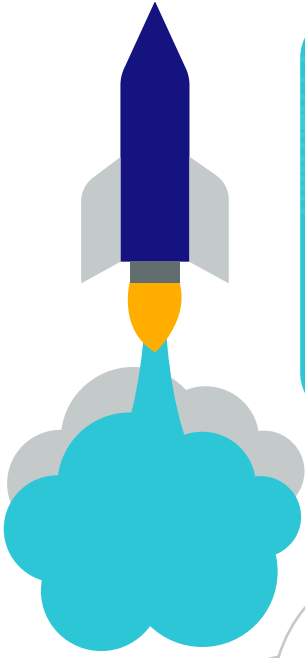
Why an end-to end speech to text solution is best for your business

Speech to text software is increasingly popular in organisations of all sizes. This is unsurprising when its potential to improve efficiency is considered. But Dragon's benefits go far beyond excellence in turning the spoken word into editable text. It is a great collaborative working tool, ideal for a distributed workforce. And cloud deployment takes the strain off internal IT teams while ensuring data security and compliance requirements are met.



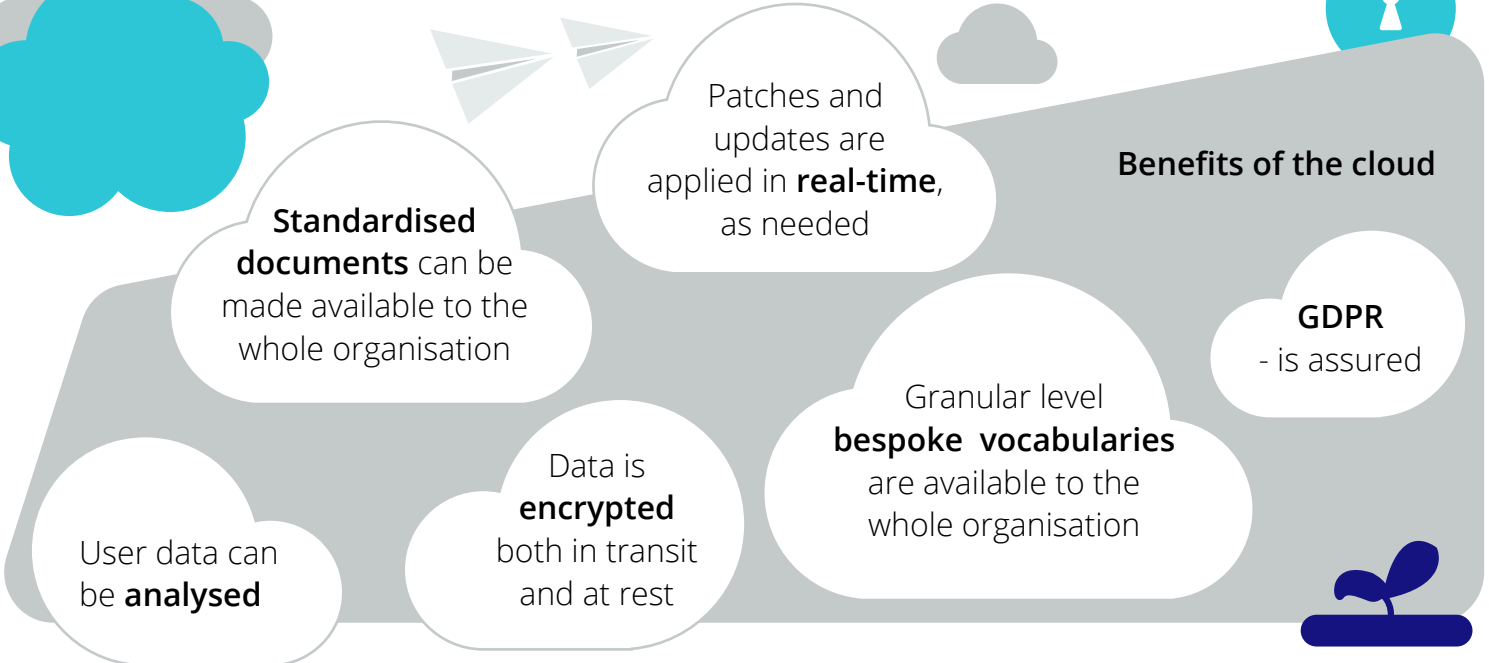
Work turnaround became faster, and the firm saved something in the region of £100,000 of overheads, which went straight onto the bottom line and increased profits.

— Jonathan Silverman, Founder, Silverman Advisory LLP



Dragon can help organisations save a considerable amount of time by using speech to text software turning spoken words into editable text up to three times faster than it can be typed. The gain is greater for those who are not trained touch-typists, so some professionals stand to make even more time-efficiency gains than others.

3x
faster



Dragon can...



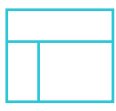
Integrate with a broad range of different applications.



Automatically use long words and phrases in response to a short command.



Get better the more they are used.



Work within **pre-designed** document templates.



Run on **multiple devices** for truly mobile, device agnostic document creation.



Automatically make **encrypted backups** to the cloud.

Accept unusual business specific words, phrases or paragraphs into their vocabulary.

Learn unusual or complex words and insert them automatically and accurately **every time** they are spoken.

In a professional setting, Dragon can generate greater benefits than freeware. From bespoke vocabularies to end-to-end data encryption and from training users to make the most of what Dragon offers to support for all the applications an organisation works with, Dragon is a fully integrated solution that sits on top of the applications you already use every day. It is designed to amplify your ability to work efficiently, be productive, and help others.